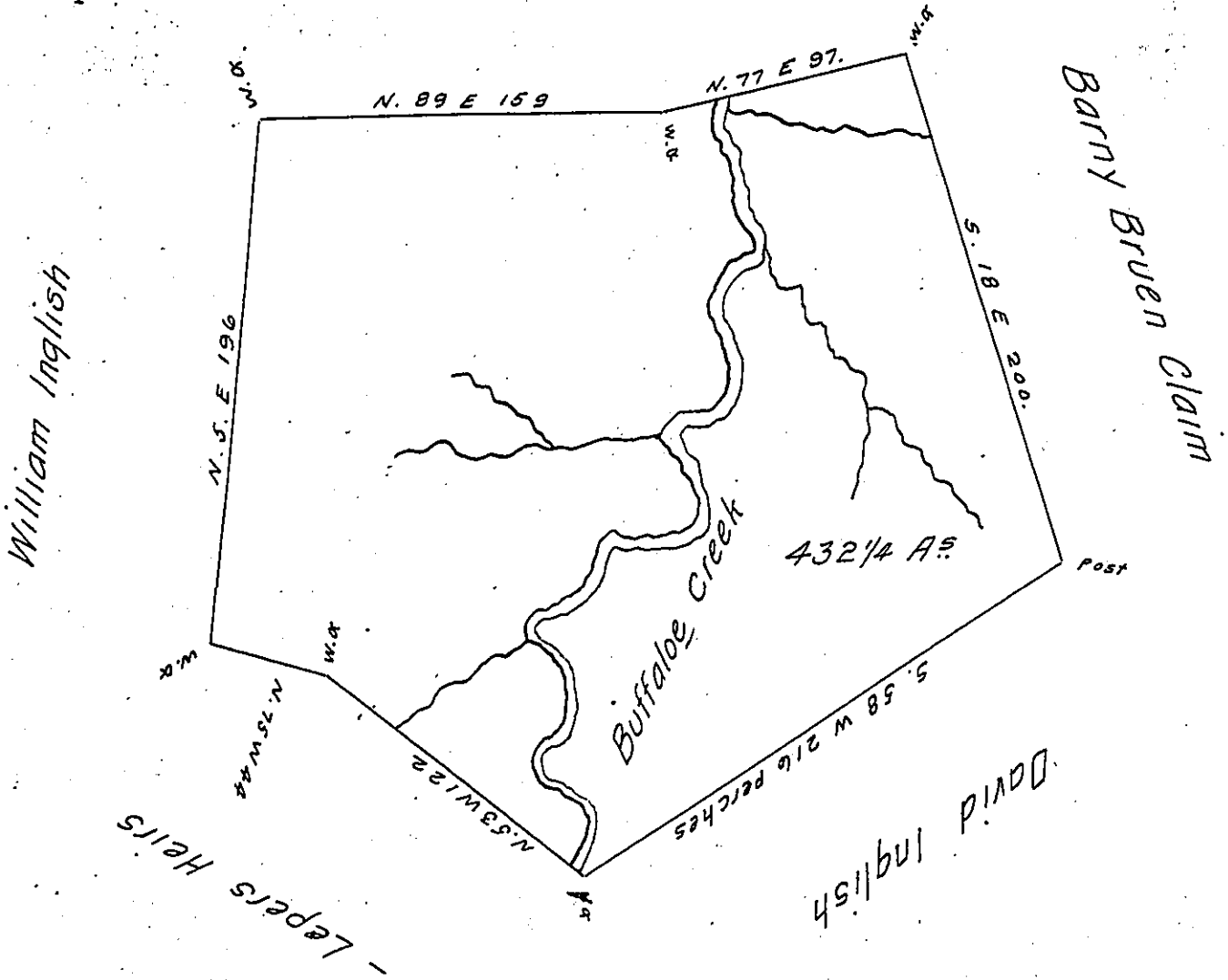


Thomas Brownlee



The Above is a Draught of a Tract of Land situate on the Waters of Buffaloe Creek Called Elizabeth's Garden Containing four Hundred and thirty two Acres and one fourth Surveyed February the 8<sup>th</sup> 1786 in pursuance of a Certificat Granted to David Inqlish by the Commissioners for the State of Virginea & Enter<sup>d</sup> With Rob<sup>t</sup> Wood S.O.G. March 11<sup>th</sup> 1780 As Appear by the Copy of S<sup>d</sup> Wood Records sent me by the Hon<sup>bl</sup> the Board of Property.

pr me

Jn<sup>o</sup> Hoge D.S.

John Lukens Esq<sup>r</sup> }  
S.G. State of Pensyl. }

IN TESTIMONY that the above is a copy of the original remaining on file in the Department of Internal Affairs of Pennsylvania, made conformably to an Act of Assembly approved the 16th day of February, 1833, I have hereunto set my Hand and caused the Seal of said Department to be affixed at Harrisburg, this twenty seventh day of April 1908.

*Henry Hoyer*  
Secretary of Internal Affairs.